

PROJECT SCHEDULE

The major milestones for the KY 801 Improvement Project are as follows:

Public Meeting	December 2021
Right of Way	Late 2022 to 2023
Utility Relocation	Late 2023 to 2024
Construction	Late 2024 to 2026



PROCEDURE FOR SUBMITTING COMMENTS

Representatives of the Kentucky Transportation Cabinet and their consultants are available to discuss the project and answer your questions regarding this project. In addition, exhibits are on display to assist you in understanding the project. You are encouraged to make an official comment that will be incorporated into the project summary. Information for the project can be found at kentucky801.com.

To make a written statement, complete one of the comment sheets provided and leave it with one of the representatives or mail it by December 29, 2021 to the address listed below.

Steve Gunnell, Chief District Engineer
Kentucky Transportation Cabinet - District 9
822 Elizaville Road
PO Box 347
Flemingsburg, KY 41041

KY 801

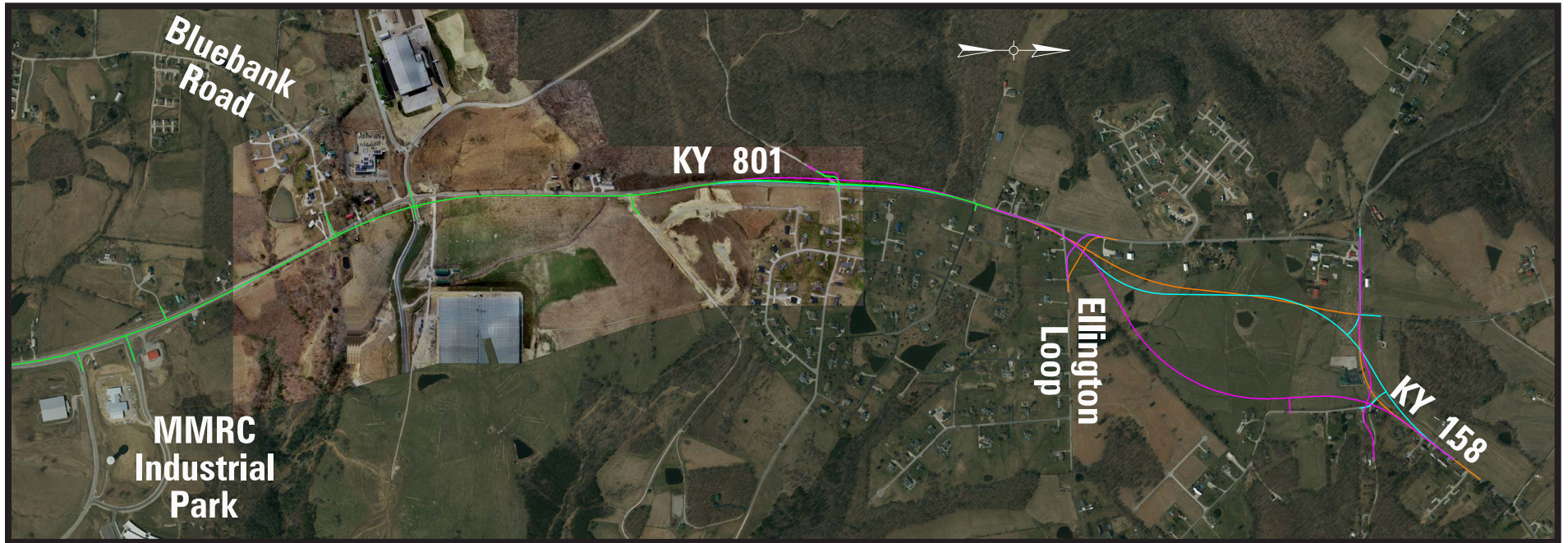
Farmers to Sharkey Road Rowan and Fleming Counties Public Meeting



Tuesday, December 14, 2021
5:00 p.m. - 7:00 p.m.

Morehead Convention Center
111 East First Street
Morehead, KY



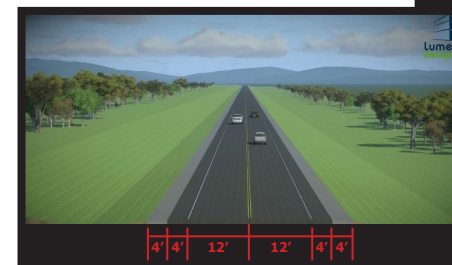


PURPOSE AND NEED

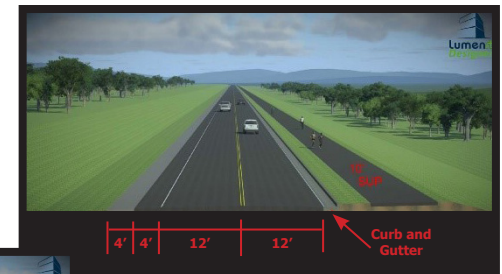
This project was undertaken to address the current roadway deficiencies, growing development, increased traffic volumes, and to improve safety, mobility and connectivity for this region of Rowan and Fleming Counties.

TONIGHT'S MEETING

The purpose of today's meeting is to introduce the project to the public and obtain information and opinions on the alignments and design options. The project corridor begins on the south end near MMRC Industrial Park and extends northward to KY 158. As can be seen in the graphic above, the proposed alignment closely follows the existing roadway from the south end to near Ellington Loop. From there three options for the new road follow. Details for these options can be seen on the display boards around the room. Also seen on the graphic to the right, there are three roadway design options. A larger detail for these is also on display. We encourage everyone to view the options, ask questions, and provide comments on the handout sheets. Thank you for attending.



2 or 3-Lane Rural Section Without Shared-Use Path (2-Lane Shown)



Hybrid Section With Curb and Gutter & Shared-Use Path (SUP)

